

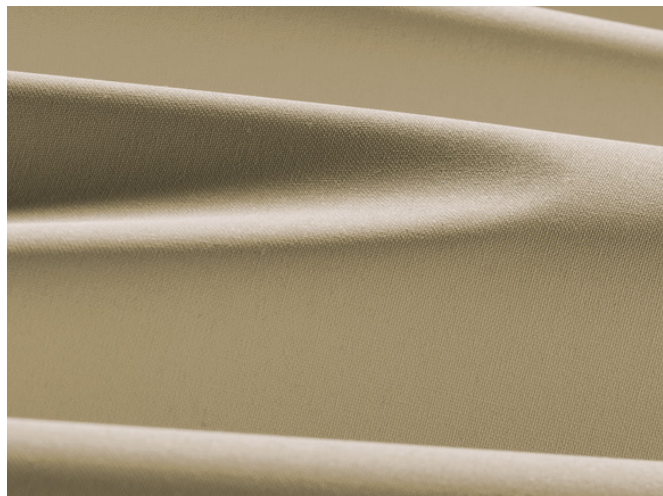
MERCURO

- Tessuto oscurante in poliestere, dalla struttura leggera e dalla perfetta tenuta
- Certificato Oeko-Tex® Standard 100, privo di sostanze nocive

APPLICAZIONI



Larghezza < 260 cm:
Sistemi per tende a rullo
dim-out
Non adatto: SG 4905



INDICAZIONI DI TESSITURA

● Oscurante

⌘ Poliestere rivestito in acrilico

kg 340 g/m²

⊥ 0.38 mm

← max. → 235 cm, 295 cm (01, 04, 28, 35, 44)

📏 8.9 cm, 12.7 cm, 240 cm, 300 cm (01, 04, 28, 35, 44)

PROPRIETÀ TECNICHE

☀ 5-6

🔥 Ritardante di fiamma

🖨 Stampa digitale

🌿 Oeko-Tex

🎨 Colori speciali da 500 m

ISTRUZIONI PER IL LAVAGGIO



RITARDANTE DI FIAMMA

B-s2,d0 (EN 13501-1)

B1 (DIN 4102-1)

M1 (NF P 92-503/5/7)

Type B (BS 5867-2)

NFPA 701



Mercurio
COEFFICIENTI OTTICI E SOLARI ($\pm 5\%$, DIN EN 410)

Colore	R_s	A_s	F_c	g_{tot}
01	66.0	34.0	0.50	0.36
04	71.0	29.0	0.46	0.33
28	69.0	31.0	0.48	0.34
33	71.0	29.0	0.47	0.34
35	71.0	29.0	0.46	0.33
44	70.0	30.0	0.49	0.34

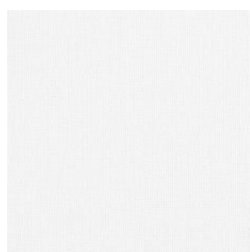
 R_s Solar reflectance

 A_s Solar absorption

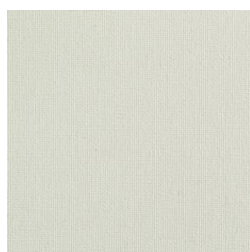
 F_c Shading factor

 g_{tot} Total g-value

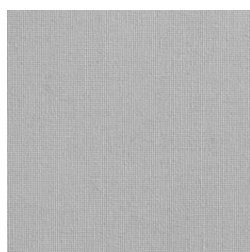
 $F_c + g_{tot}$: Valore calcolato con il vetro: $0.72 / U_g = 1.6 \text{ W/m}^2 \text{ K}$, DIN EN 13363-1

Mercurio


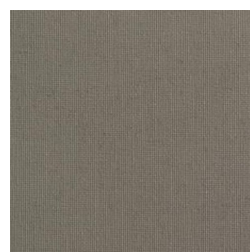
01



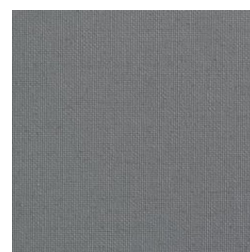
04



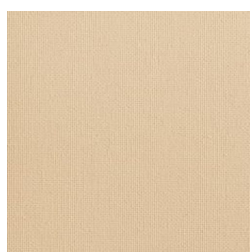
28



33



35



44

I colori mostrati non sono vincolanti